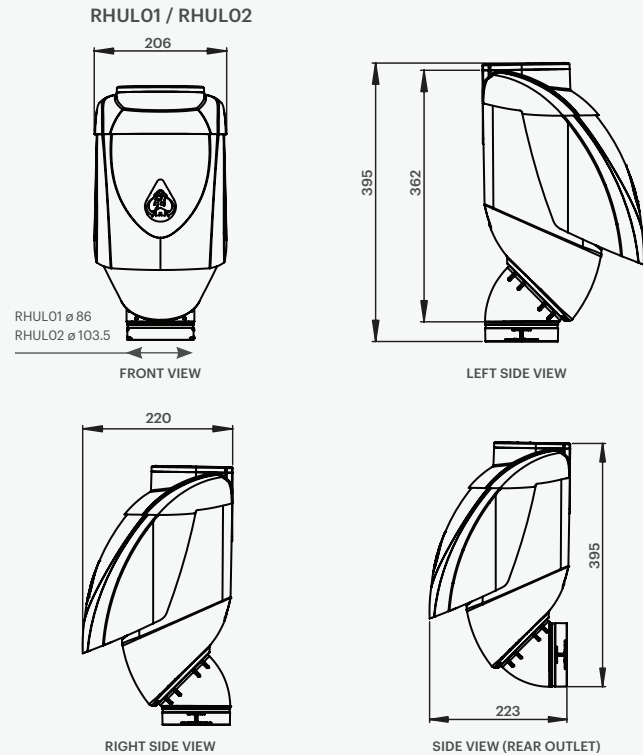


PRODUCT DIMENSIONS



ALL DIMENSIONS IN MM UNLESS OTHERWISE STATED.

Pipe Fitment

RHULO1	ø 86mm	Fits inside 90mm pipe
RHULO2	ø103.5mm	Fits inside 100mm pipe

DISCLAIMER This product specification is not a complete guide to product usage. Product specifications may change without notice. For more information visit rainharvesting.com.au. Keep this manual handy for future reference. © Rain Harvesting Pty Ltd.

COMPLIANCE

- AS/NZS 3500.3:2003 Plumbing and Drainage – Stormwater Drainage
- enHealth Council
 - Guidance on the Use of Rainwater Tanks
 - Preventing Mosquitoes Breeding
- HB230:2008 Rainwater Tank Design and Installation Handbook
- Queensland Health Regulations 1996 (Part 8 – Mosquito Prevention)

RAIN HARVESTING

by Blue Mountain Co

rainharvesting.com.au

+61 (0)7 3248 9600

RAIN HARVESTING

by Blue Mountain Co

Leaf Eater Ultra



Installation and Specification Guide

PRODUCT DETAILS

A feature-packed rain head that keeps leaves and mosquitoes out of your pipes - and looks good doing it.

RHULO1	90mm
RHULO2	100mm

FEATURES AND BENEFITS

- Integrated cover and cap to compliment modern and classic architecture
- Leaf Eater Ultra™ uses the Leaf Slide and a precisely angled vibrating screen to deflect debris off the screen, for high flow rate performance. (Hydro Activated Filtration™ technology)
- A single mosquito proof stainless steel mesh screen with 0.955mm aperture
- Pivot the outlet to suit vertical or horizontal (rear outlet) downpipes (VH Pivot™)
- Maximises the catchment efficiency at low and high flow rates
- Multi-fit cap – 90mm, 100mm, 100mm x 75mm and 100mm x 50mm

Installation

WHAT'S IN THE BOX?

- Leaf Eater Ultra
- Leaf Eater Ultra (multi fit cap)
- Leaf Eater Ultra (leaf slide)

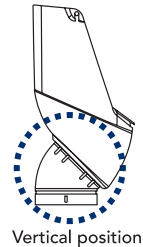
TOOLS/MATERIALS YOU MAY REQUIRE

- Tape measure
- Marker pen
- Saw
- Tin snips (eave & "mid" mount)
- Screws
- Screwdriver or drill
- Solvent cement glue

NOTE 1: Ensure a suitable gap 20mm-50mm is placed between the open end of your downpipe and screen of your rain head, to allow debris to escape the flow of water. This can vary depending on the type/size of leaf matter and debris you experience in your gutter.

GUTTER MOUNT (VERTICAL)

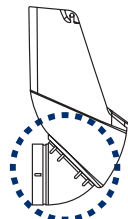
1. Locate the position at which you want to install your Leaf Eater Ultra rain head. Whether this is directly under your gutter or eave or midway down your downpipe, it should be a minimum of 500mm above your tank inlet and tank overflow pipe.
2. Measure 308mm from the bottom of your gutter outlet and cut and remove this section of downpipe. Ensure the cut edge is clean and smooth.
3. Remove your Leaf Eater Ultra rain head cover by unscrewing the two screws.
4. Remove the cap and determine if there is enough space to insert between the gutter and Leaf Eater Ultra, allowing for the rain head to be screwed to the fascia. Use snips to remove a section to fit the appropriate downpipe. If there is not enough space dispose of cap.
5. Slide the cap up the top section of downpipe and hold temporarily in place.
6. Slide the rain head outlet into the bottom section of downpipe.
7. Secure your rain head by screwing it into position through the screw slots provided. Use appropriate screws (and anchors, if required).
8. Check the placement of the vibrating screen. Ensure it sits behind and below the front face (FIGURE 1).
9. Insert the Leaf Slide into the slot holes (FIGURE 2).
10. Re-install the front cover.
11. If desired, you can paint your rain head and cover to match your downpipes and/or building.



Vertical position

GUTTER MOUNT (HORIZONTAL)

1. Locate the position at which you want to install your Leaf Eater Ultra rain head. Whether this is directly under your gutter or eave or midway down your downpipe, it should be a minimum of 500mm above your tank inlet and tank overflow pipe.
2. Swivel the outlet to the horizontal position. Some force may be required.
3. Remove your Leaf Eater Ultra rain head cover by unscrewing the two screws.
4. Remove the cap and determine if there is enough space to insert between the gutter and Leaf Eater Ultra, allowing for the rain head to be screwed to the fascia. Use snips to remove a section to fit the appropriate downpipe. If there is not enough space dispose of cap.



Horizontal position

GUTTER MOUNT (HORIZONTAL) Continued

5. Position the Leaf Eater Ultra next to the existing downpipe, mark and cut top and bottom cut lines. Ensure all cut edges are clean and smooth.
6. Use solvent cement to glue the bottom outlet into the horizontal pipe.
7. Screw your rain head into position through the screw slots provided. Ensure appropriate screws (and anchors, if required) are used.
8. Check the placement of the vibrating screen. Ensure it sits behind and below the front face (FIGURE 1).
9. Insert the Leaf Slide into the slot holes (FIGURE 2).
10. Re-install the front cover.
11. If desired, you can paint your rain head and cover to match your downpipes and/or building.

EAVE & "MID" MOUNT (VERTICAL & HORIZONTAL)

1. Locate the position at which you want to install your Leaf Eater Ultra rain head. Whether this is directly under your gutter or eave or midway down your downpipe, it should be a minimum of 500mm above your tank inlet and tank overflow pipe.
2. Remove a 308mm section of pipe at your desired installation point. Ensure all cut edges are clean and smooth.
3. Remove the cap and use snips to remove a section to fit the appropriate downpipe.
4. For horizontal installation, swivel the outlet to the horizontal position. Some force may be required.
5. Remove your Leaf Eater Ultra rain head cover by unscrewing the two screws.
6. Slide the cap up the top section of downpipe and hold temporarily in place.
7. For vertical installation, insert your rain head by sliding the outlet into the bottom section of downpipe. For horizontal installation, use solvent cement to glue the bottom outlet into the horizontal pipe. Regardless of which configuration you choose, the back-fixing plate must sit behind the top section of downpipe.
8. Screw your Leaf Eater Ultra into position through the screw slots provided. Ensure appropriate screws (and anchors, if required) are used.
9. Check the placement of the vibrating screen. Ensure it sits behind and below the front face (FIGURE 1).
10. Insert the Leaf Slide into the slot holes (FIGURE 2).
11. Re-install the front cover.
12. Slide the cap back down the downpipe until it sits securely on the top of your Leaf Eater Ultra.
13. If desired, you can paint your rain head and cover to match your downpipes and/or building.

FIGURE 1

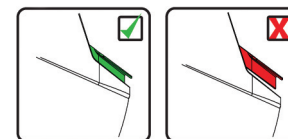
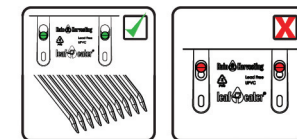


FIGURE 2



MAINTENANCE

Your rain head's patented Hydro Activated Filtration™ screen technology is mostly self-cleaning. If cleaning is required, simply hose or brush off the screen.