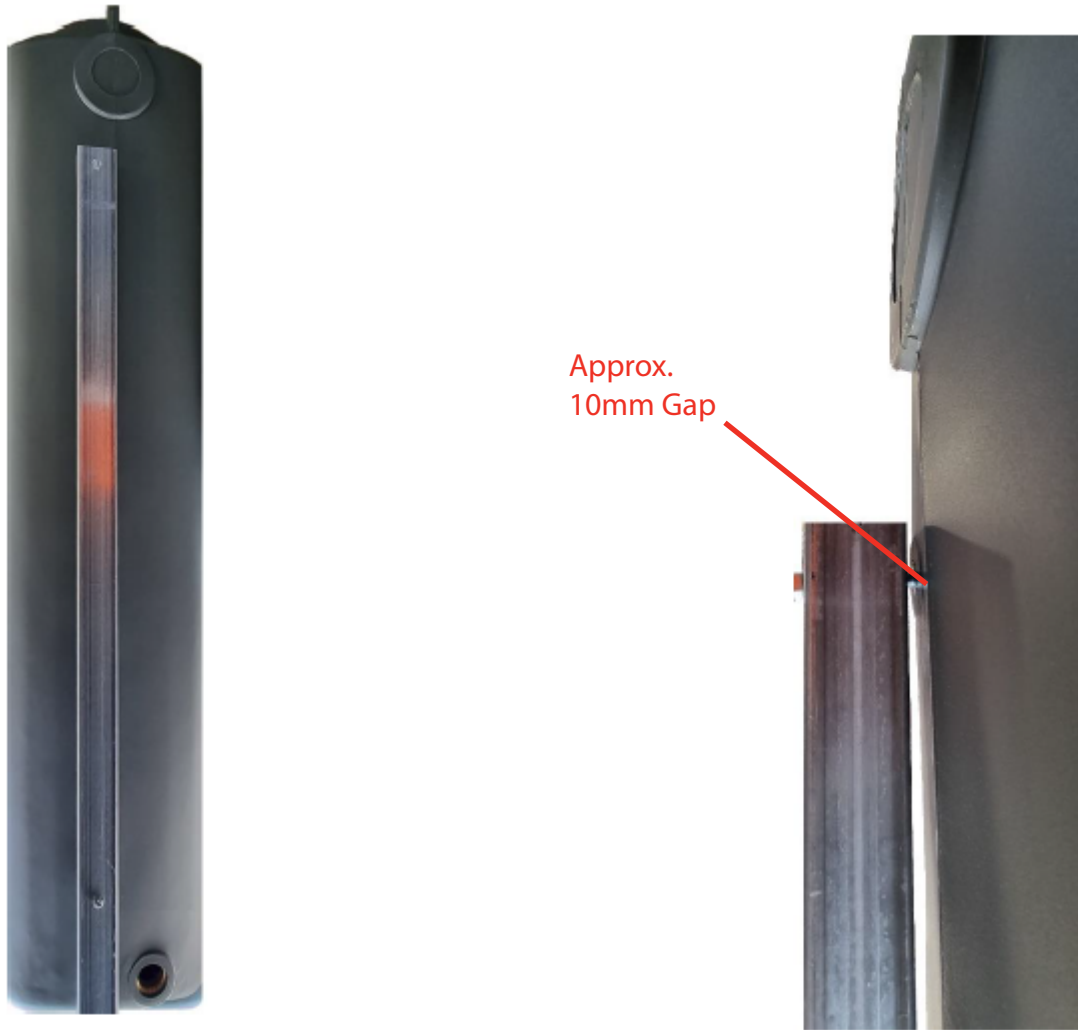


RESTRAINT DETAIL

SPAKRP - Pole restraint kit, SPAKRCP - Concrete pad kit and Timber alternative



Please follow the installation drawing for the SPARK pole restraint kit, use both poles for each tank and all 4 bolts with washers.

Important notes:

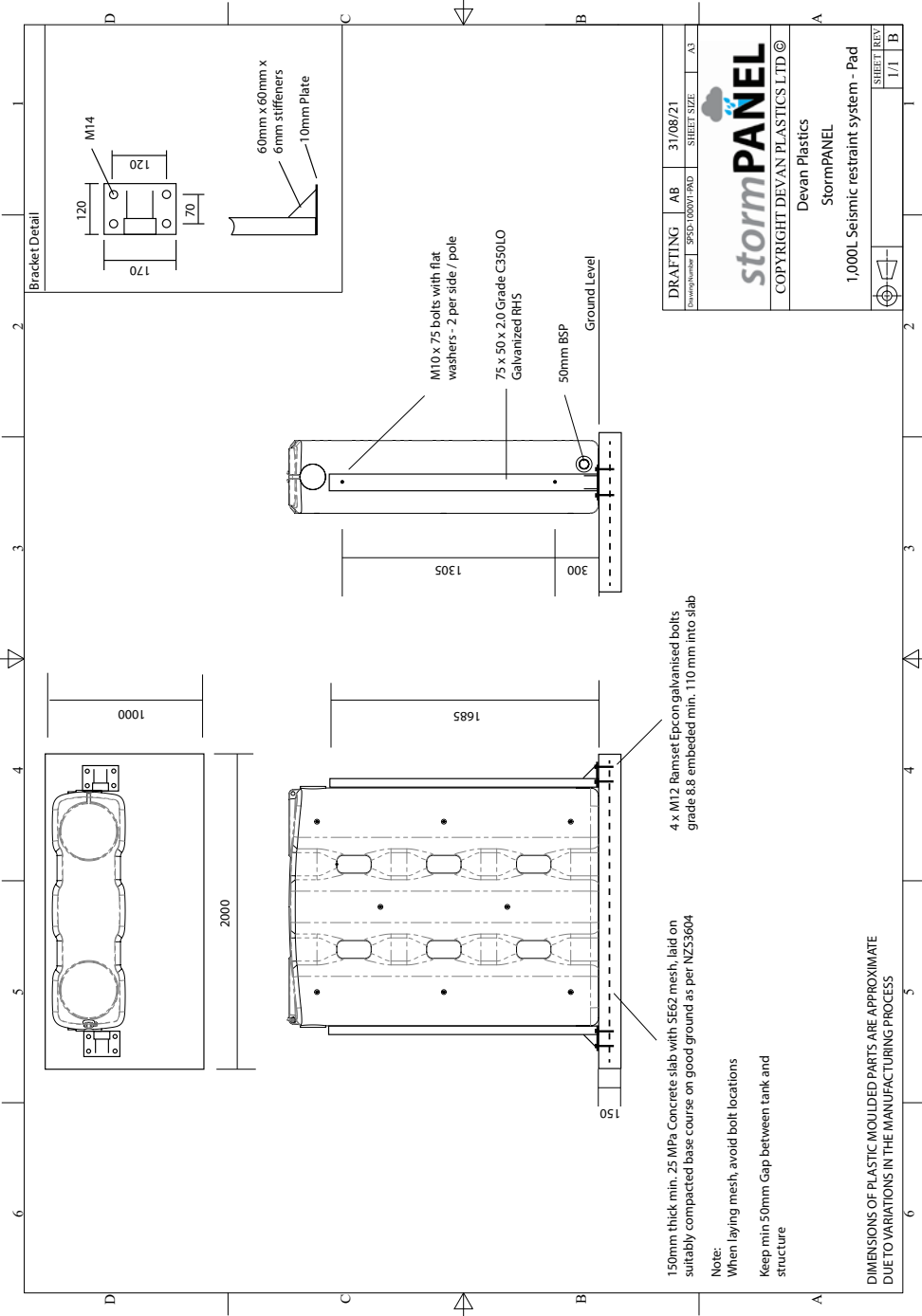
- M10 x 75mm 8.8 bolt into tank allows for a gap between the pole and the tank, the bolt does not pull the pole tight against the tank, screw in bolt until it stops and then lightly nip up.
- Ensure the base will not subside under the weight of the tank putting downwards stress on the anchoring points.
- Minimum internal distance between poles is 1525mm and maximum is 1545mm, **1540mm is the target measurement to allow for expansion of the tank.**
- Ensure plastic end caps are installed to help prevent water build up in poles
- The ends of the steel poles are sharp, handle with gloves

IMPORTANT: A minimum of 50mm gap between the tank and the building is required to allow for tank expansion over time, if possible 75mm is ideal.

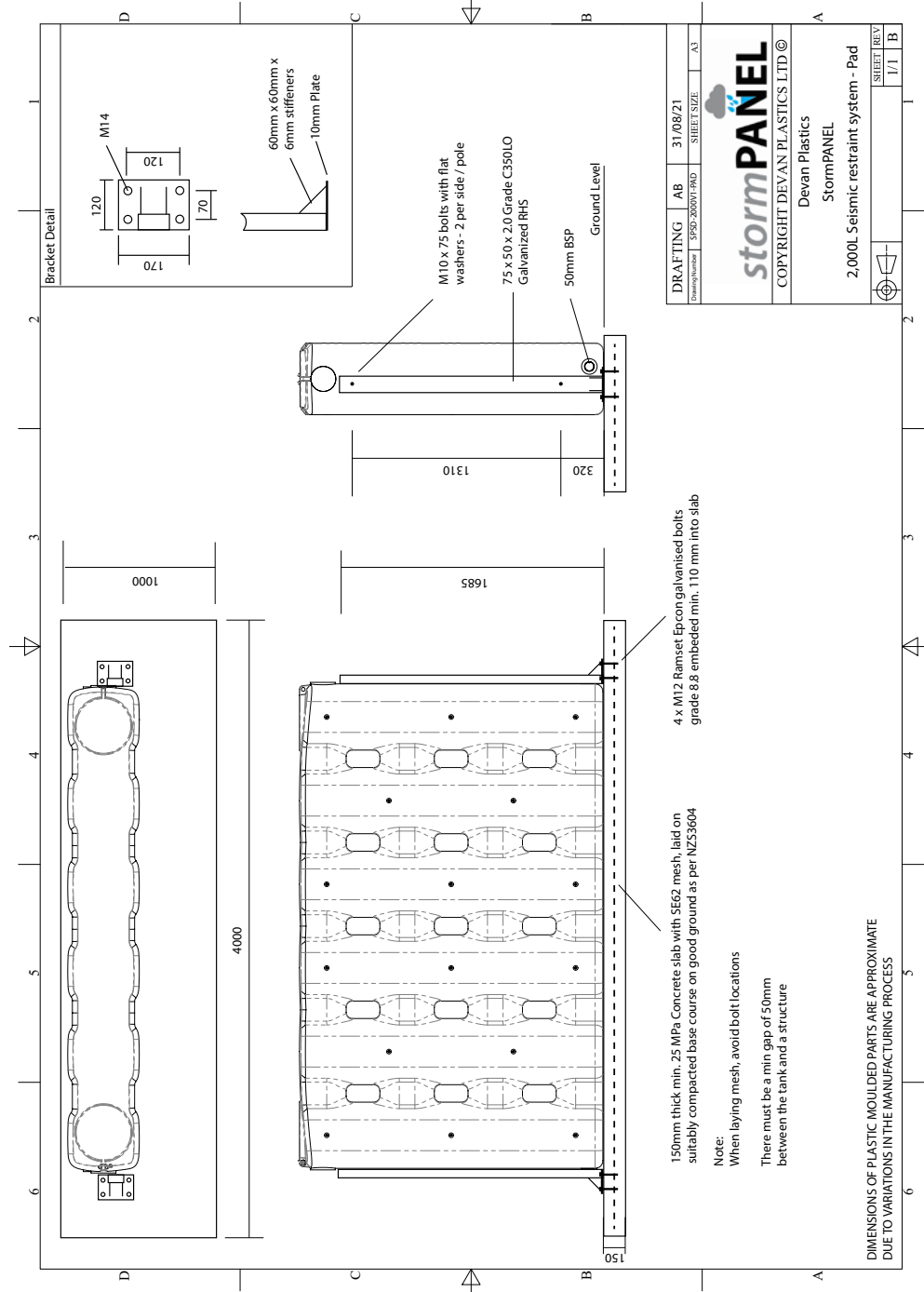
Restraint bolts:

10mm zinc coated restraint bolts screwed into the tank are to be firm but not over tight (max torque 10nm or 7.4ft/lb) Screw in by hand until the bolt can't be tightened any further and then a quarter of turn with a spanner achieves this.

There should be approx. a 10mm gap between the restrain and the tank.



DIMENSIONS OF PLASTIC MOULDED PARTS ARE APPROXIMATE DUE TO VARIATIONS IN THE MANUFACTURING PROCESS



DIMENSIONS OF PLASTIC MOULDED PARTS ARE APPROXIMATE DUE TO VARIATIONS IN THE MANUFACTURING PROCESS